

GENERAL CONDITIONS

A. CONDITIONS FOR USE:

The SURE SAFE® STEEL BUTTRESS™ SYSTEM is custom designed for each and every installation and must be accompanied by a set of site specific calculations obtained from SURE SAFE® DESIGN. Each design is sealed by a professional engineer, registered in the state where the system is to be installed.

B. DESIGN DATA:

a. MATERIALS:

- Steel plates & shapes: ASTM A36
- Tube steel: ASTM A50
- Bolts: ASTM A307
- Welding: AWS E70XX, ER70S-X
- Galvanizing: ASTM A390, steel plates, shapes
- Concrete: f'c = 2500 psi., min. @ 28 days

b. SURE SAFE® products have been laboratory tested with the following results:

- Vertical load:
 - 4 leg piers: 12,000 # (safety factor of 3)
 - Tube piers: 9334# (safety factor of 3)
- Lateral load @ top of 4 leg pier: 1967# (s.f. of 3)
- Sliding coefficient: 0.67 (s.f. of 2.16)

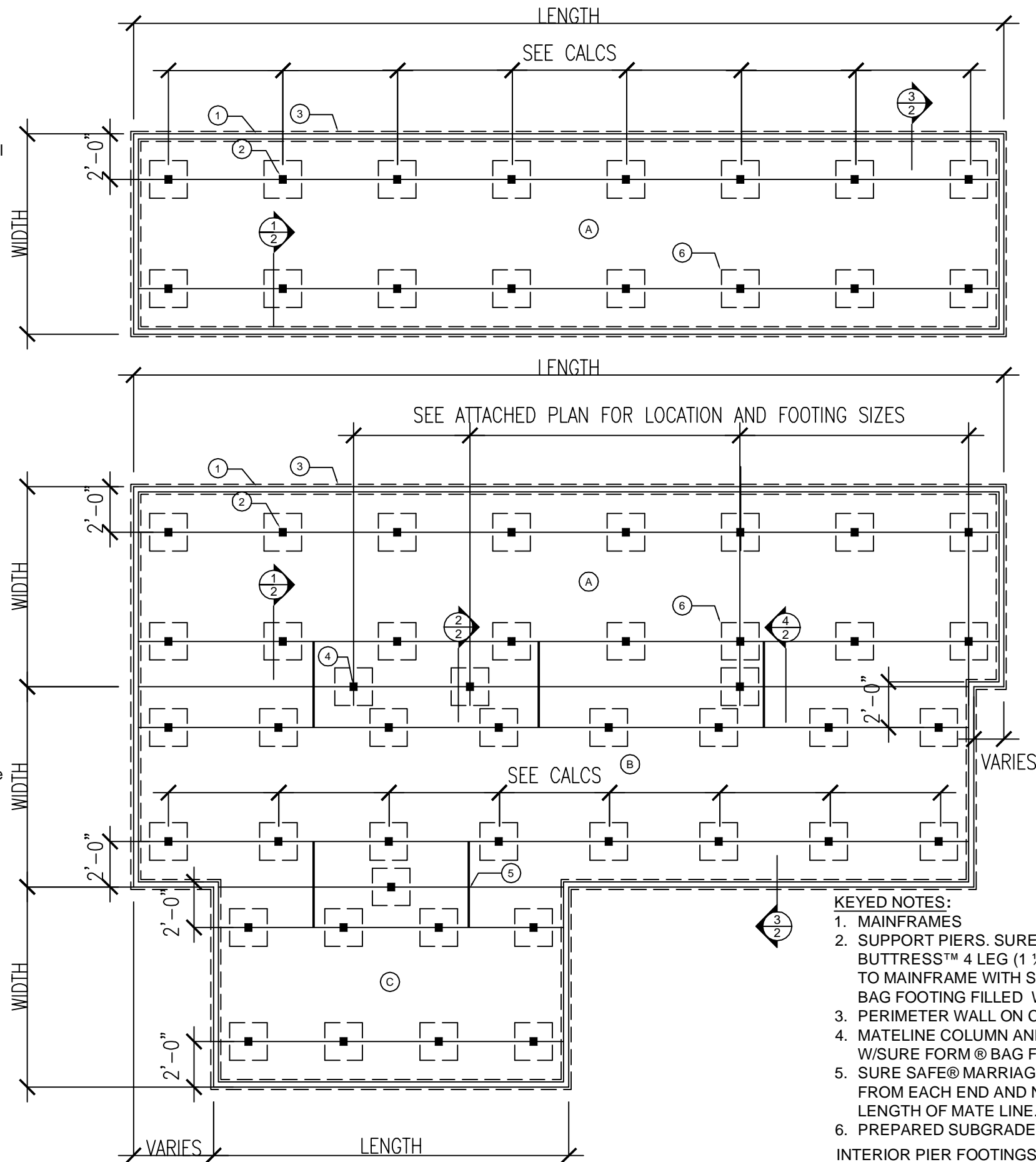
C. SURE SAFE® PRODUCTS: The installer shall insure that all components used are SURE SAFE® INDUSTRIES INTERNATIONAL, U. S. Patented products, labeled as follows; SURE® FORM BAGS, #5664377, SAFETY JACKS: #4886797, MARRIAGE LOCKS: #4937989

D. SOIL CONDITIONS AND PREPARATION:

a. All concrete footings must be placed on undisturbed soil (organic matter and sod removed), or engineered fill that has been compacted to a minimum density of 95% to achieve a minimum bearing pressure of 1000PSF. Any existing ground vapor barrier must be cut and removed from below each new support pier. The engineer cannot be responsible for the ultimate performance of the SURE SAFE® support system on a site having expansive clay, fill or other adverse conditions. Sites containing expansive soils must be investigated by a Geotechnical engineer and the condition mitigated in compliance with his written report and recommendations, prior to the design and installation of the foundation.

TEMPORARY SUPPORT with TEMP BLOCKS

THE SURE SAFE® TEMPBLOCK SYSTEM is used to temporarily support the home, while the SURE SAFE® STEEL BUTTRESS permanent foundation system is installed. Place as follows: Under each steel beam: within 5 feet of each end and then a maximum of 20 feet apart along the remainder of the beam; Level top of all steel tubes using 1" diameter bolts and nuts. Re level after home is placed as required. REMOVE TEMPBLOCKS for REUSE: after permanent support system is completed and concrete in footings has cured.



KEYED NOTES:

1. MAINFRAMES
2. SUPPORT PIERS. SURE SAFE® GALV. STEEL BUTTRESS™ 4 LEG (1 1/4" x 1 1/4" X 1/8") PIER, ATTACHED TO MAINFRAME WITH SAFETY JACK AND SURE FORM® BAG FOOTING FILLED W/ CONCRETE.
3. PERIMETER WALL ON CONT. CONCRETE FOOTING.
4. MATELINE COLUMN AND BLOCKING SUPPORT PIERS, W/SURE FORM® BAG FOOTING FILLED W/ CONCRETE.
5. SURE SAFE® MARRIAGE LOCKS, LOCATE WITHIN 15' FROM EACH END AND NOT MORE THAN 15' APART FOR LENGTH OF MATE LINE.
6. PREPARED SUBGRADE.

INTERIOR PIER FOOTINGS

ALL INTERIOR PIER FOOTINGS ARE B30 (30"X30") W/ NO REBAR UNLESS SPECIFICALLY NOTED AS B42 (42"X42") W/(3) - #4 BARS E.W. IN BOTTOM AS SHOWN IN DETAIL 2/2.

| | | |
|--|------------------------|---------------|
| <p>SURE SAFE® INDUSTRIES INTERNATIONAL 1257 Simpson Way, Escondido, CA 92029 1.800.322.1999</p> | <p>FOUNDATION PLAN</p> | <p>1 of 2</p> |
| <p>HUD-CODE FRAME ON PERMANENT FOUNDATION SYSTEM</p> | | |